

# PRESIDENTIAL MEADOWS – PHASING MAP 2015 DEVELOPMENT STATUS (417.675 ACRES)

THE PARKS AT HAWK HOLLOW, L.P.  
196.236 ACRES  
DOCUMENT NO. 2001154813

JOHN L. PERRY, ET UX  
48.43 ACRES  
VOLUME 994, PAGE 132

JOHN L. PERRY, ET UX  
120.00 ACRES  
VOLUME 1065, PAGE 82

TARA JOE SAMPERI MCDON  
35.08 ACRES  
VOLUME 12521, PAGE 136

ANDREW KROLL, ET UX  
35.26 ACRES  
VOLUME 12521, PAGE 136

JOHN C. ENDERS  
5.07 ACRES  
VOL. 4226, PG. 328

RANON ROMAN, III  
3.31 ACRES  
DOCUMENT NO. 2001056333

TYLER BROWN, TRUSTEE  
5.02 ACRES  
VOLUME 13159, PAGE 1767

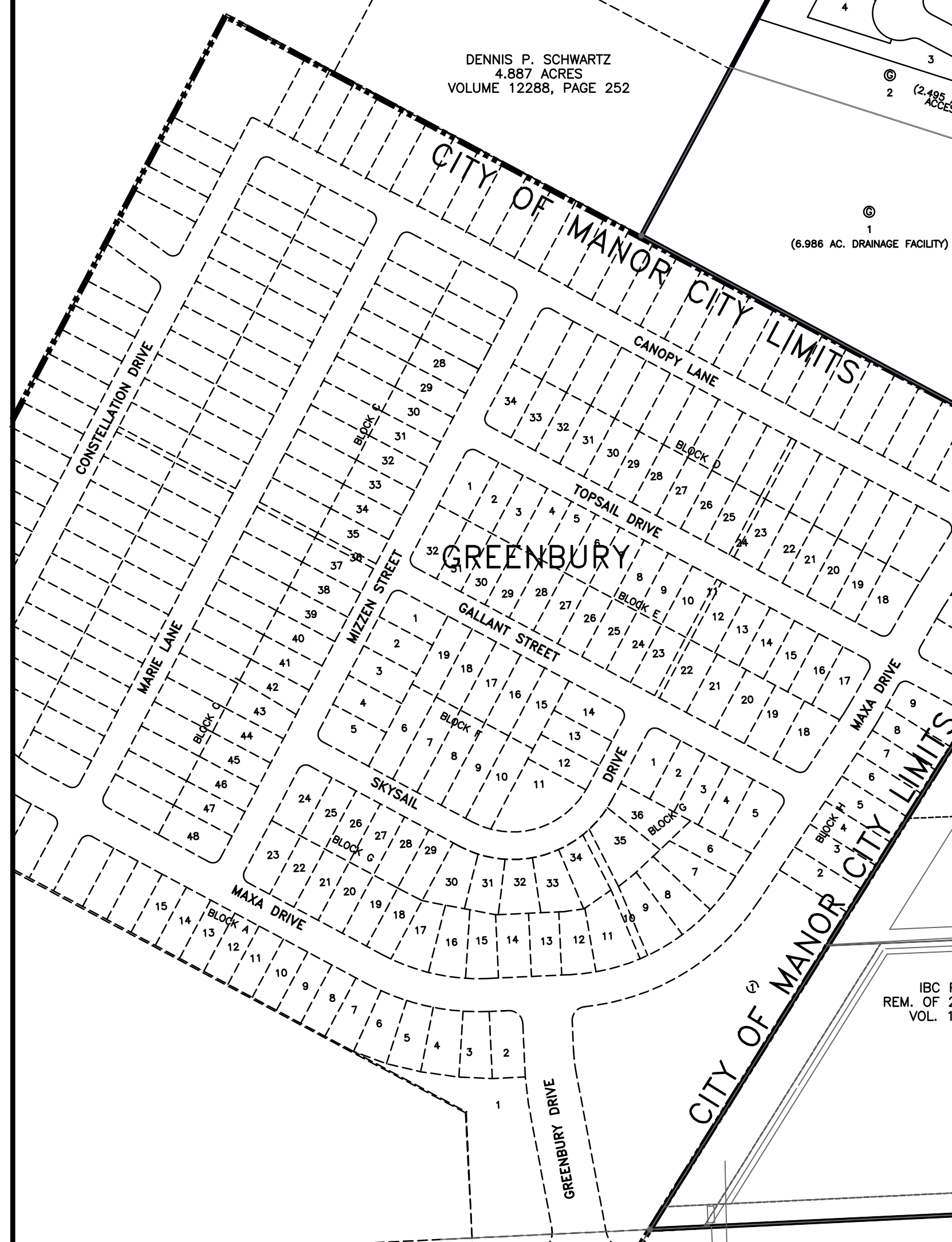
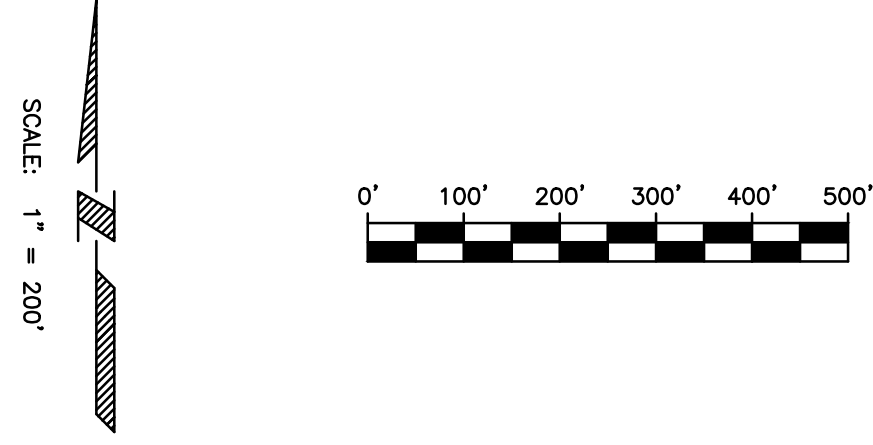
DEBRA S. SRINENSKY  
4.887 ACRES  
VOLUME 10519, PAGE 587

DENNIS P. SCHWARTZ  
4.887 ACRES  
VOLUME 12288, PAGE 252

SVMW MANOR LIMITED PARTNERSHIP  
42.9819 AC.  
DOC. NO. 2002197564

IBC PARTNERS, LTD.  
142.9819 AC.  
DOC. NO. 2002197564

IBC PARTNERS, LTD.  
298.644 AC. TRACT I  
VOL. 12892, PG. 1736



MAP LEGEND	
	PHASING LINE
<b>#1</b>	PHASE NO.

PROJECT NO. 1518-1006	DESIGNED BY: JCH
FILE NO. 85.86.608.15.18	DRAWN BY: JCH
DATE: JUNE 2015	CHECKED BY:
SCALE: 1" = 200'	POSTED BY:

8834 N. Capital of Texas Hwy.  
Austin, Texas 78758  
Suite 140  
650.463.9971  
650.463.9933  
TYPED BY: JCH